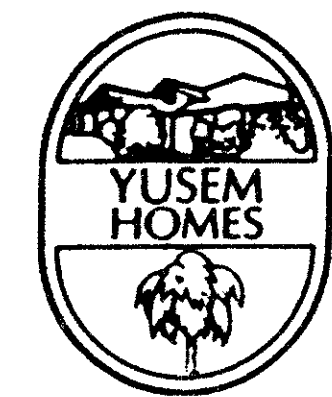




- Island Court At Boca West -



70

State of Florida)
County of Palm Beach)

This Plat was filed for record at _____ this _____ day of _____, A.D., 1986, and duly recorded in Plat Book _____ on Pages _____ thru _____

John B. Dunkle,
Clerk of the Circuit Court.

By: _____
Deputy Clerk.

"Seal"
John B. Dunkle, Clerk
Of The Circuit Court of
Palm Beach County

- Lying In Section Nine, Township Forty Seven South, Range Forty Two East, Palm Beach County, Florida -

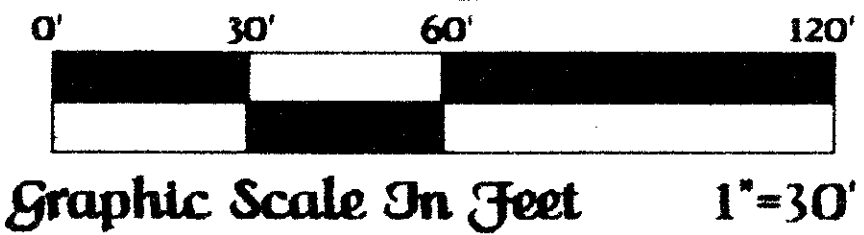
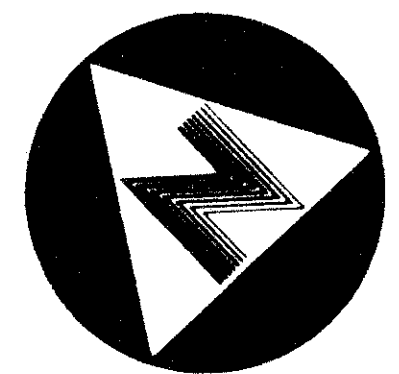
Sheet Four Of Five

July, A.D., Nineteen Hundred Eighty Six

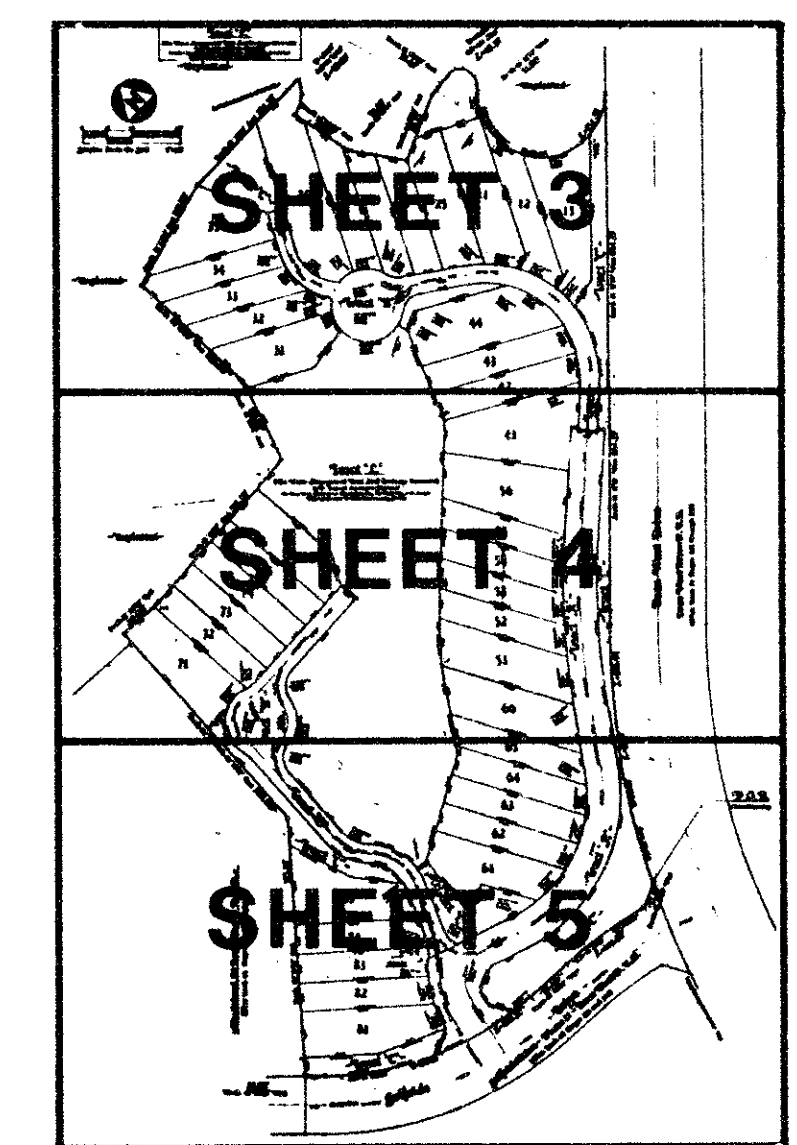
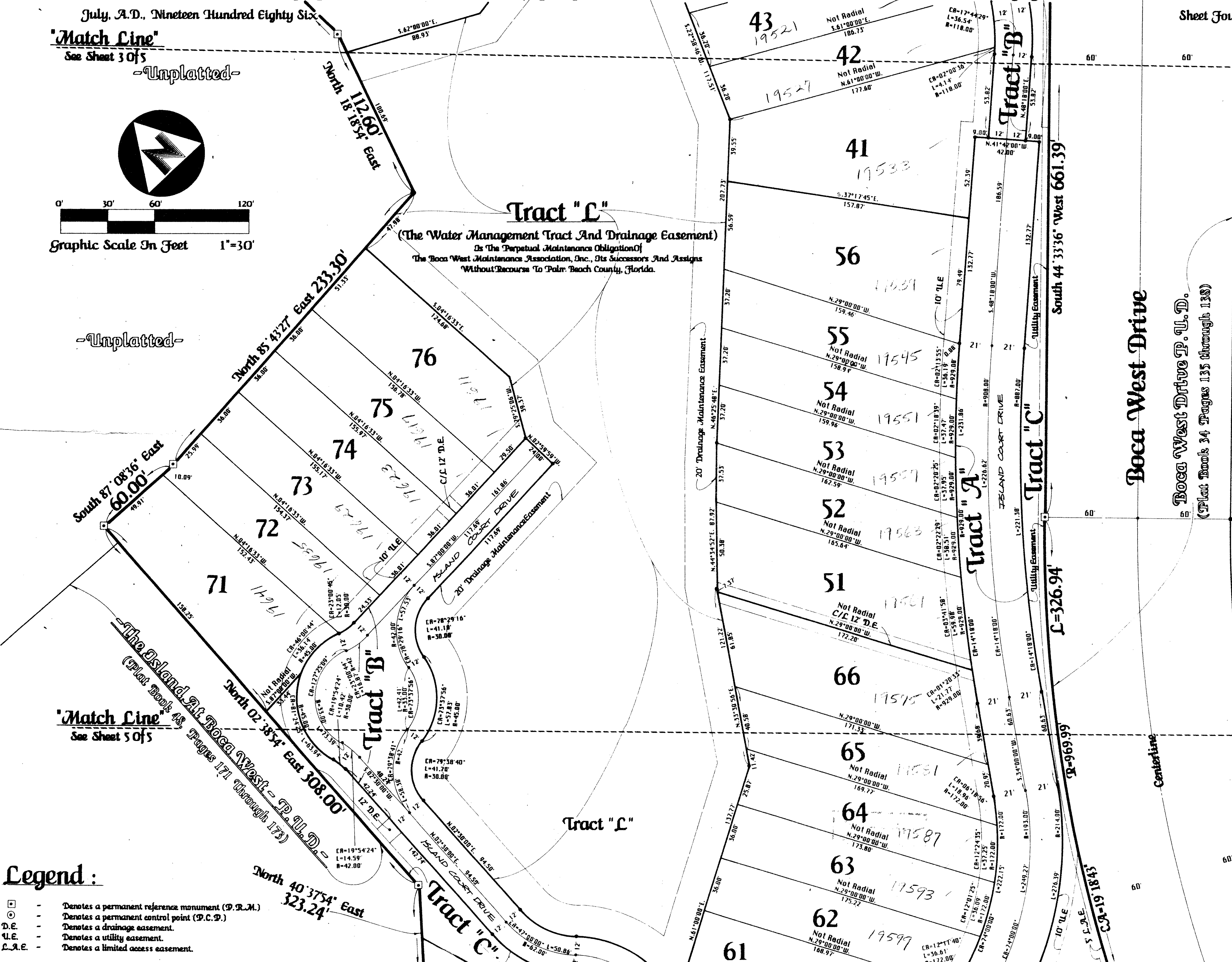
'Match Line'
See Sheet 3 Of 5

'Match Line'
See Sheet 3 Of 5

-Unplatted-



-Unplatted-



-KEY MAP-
not to scale

'Match Line' 2214-007
See Sheet 5 Of 5

ADD. BY _____
CHECKED BY _____

This instrument was prepared by Wm. R. Van Campen, R.L.S., in and for the offices of Bench Mark Land Surveying and Mapping, Inc., Four Points Centre, 50 South Military Trail, Suite 200, West Palm Beach, Florida, 33415 (305) 689-2111

BENCH MARK
land surveying and mapping, inc.
WEST PALM BEACH, FLORIDA

-Record Plat-
-Island Court At Boca West-

Sheet Four Of Five

Legend :

- - Denotes a permanent reference monument (P.R.M.)
- - Denotes a permanent control point (P.C.P.)
- D.E. - Denotes a drainage easement.
- U.E. - Denotes a utility easement.
- L.A.E. - Denotes a limited access easement.